

## Table of Contents

Program Installation .....	2
Install.....	2
Uninstall.....	4
Help files on CD.....	4

## Program Installation

This tutorial explains how to install and uninstall the **PatternFinder (PF)** software.

### Install

The installation program is on the **PatternFinder** CD. Insert the CD into the CD drive. To install the program, follow the InstallShield Wizard.

If the InstallShield Wizard does not appear automatically, do the following:

1. Click on the Start button in Windows.
2. Go to My Computer
3. Click on the CD drive
4. Run the setup.exe application file.

The user will be asked to accept the License Agreement



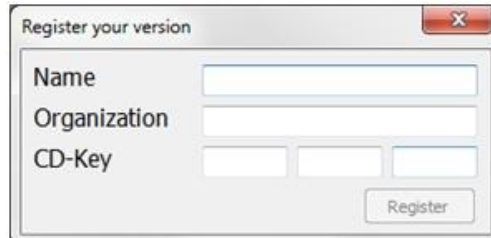
*Figure 1 License Agreement*

The user will be prompted for a directory name for the **PatternFinder** program.



*Figure 2 Destination Folder*

When the program is started for the first time, the following window appears:



*Figure 3 Registration*

Insert name, organization and the 12 character CD-Key which is provided on the CD holster. After you have registered, the program is activated and your license year begins.

Once the program has been installed, a shortcut to the program will appear on the start menu and the desktop.

## Uninstall

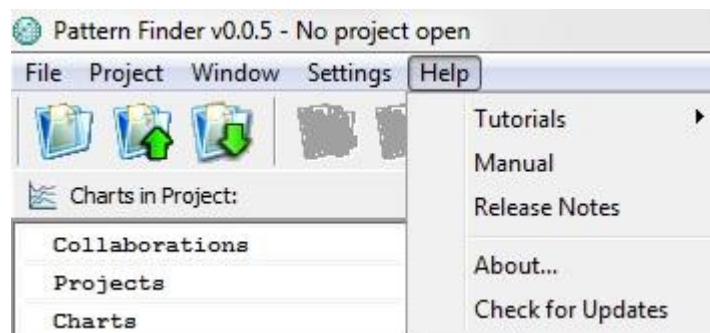
To uninstall the program, do the following:

1. Click on the Start button in Windows.
2. Go to Settings and Control Panel.
3. Choose Add/Remove Programs
4. Choose **PatternFinder** and click on Change/Remove.

Note that data files created after installation will not be deleted even though the program is uninstalled.

## Help files on CD

Along with the manual and release notes, tutorials will be installed with the software. To access the files, select **Help** on the menu bar (see figure 4):



*Figure 4 Help Menu*

The **Help** menu offers the following options:

1. Tutorials
  - PDF
  - Video
2. Manual
3. Release Notes
4. About
5. Check for Updates